

# Drum Set

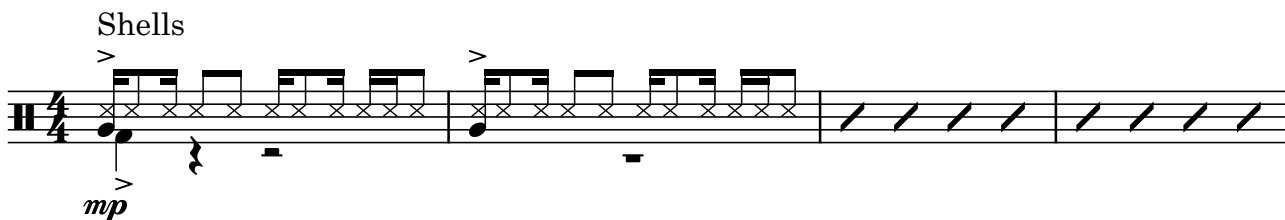
## My War

Shinsei Kamattechan  
Arr. Yumi

### A: Intro

$\text{♩} = 145$

Shells



*mp*

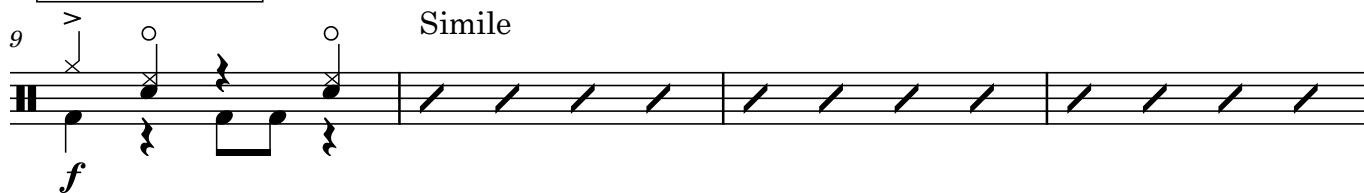
5



(4) Fill


### B: Chorus 1

9



*f* Simile

13



(4) Fill

### C: Post-Chorus 1

17



(4) Fill

### D: Verse 1

21



*mp* Simile

25



(8) Fill

Drum Set

My War

2

29



33



E: Chorus 2

37



41



45



49

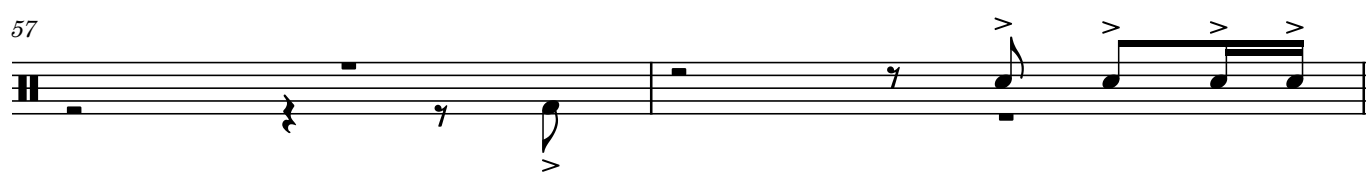


F: Post-Chorus 2

53



57



Drum Set

My War

3

G: Verse 2

59 *mf* *Simile*

(4)

63

(8)

67

(12)

71 *Fill*

(16)

H: Chorus 3

75 *f* *Simile*

(4)

79 *Fill*

(8)

83

(12)

87 *Fill*

(16)

Drum Set

My War

4

I: Post-Chorus 3

91

*ff*

Fill

J: Bridge

95

(4)

99

Fill

(8)

K: Bridge 2

103

Simile

*mf*

(4)

107

Fill

(8)

111

*f*

(12)

115

Fill

(16)

L: Verse 3

119

*mf*

(4)

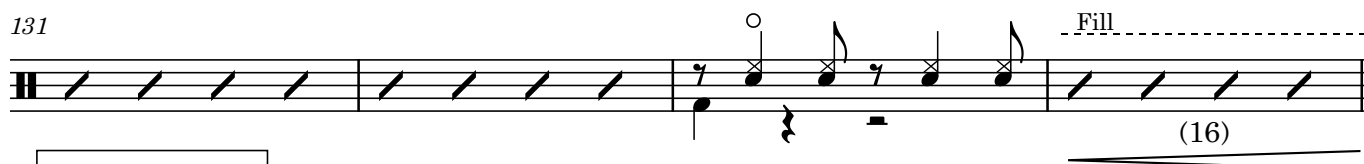
123



127



131



**M: Chorus 4**

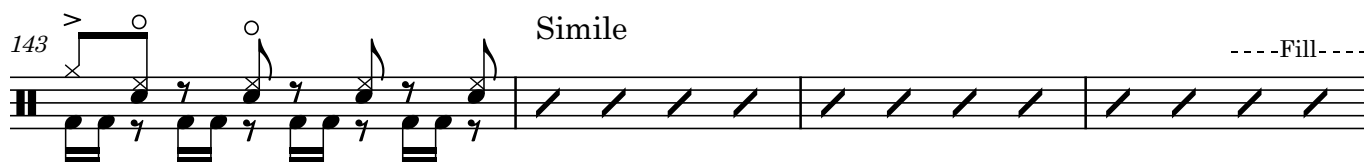
135 Drum & Bass Solo



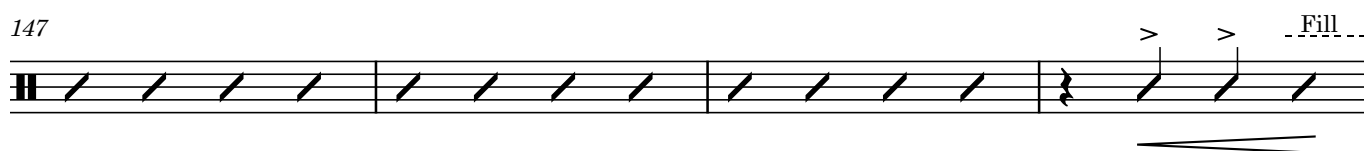
139



143 *Simile*



147



**N: Post Chorus 4**

151 *Simile*



**O: Outro**

Marching band style

Simile

155

*f*

159

The musical score for the Drum Set part of 'My War' is divided into two systems. The first system, labeled 'Marching band style', begins at measure 155 and continues to measure 168. It features a strong, rhythmic pattern using eighth and sixteenth notes, with a forte (*f*) dynamic. The second system, labeled 'Simile', begins at measure 159 and continues to measure 172. It features a similar rhythmic pattern, also with a forte (*f*) dynamic. The score is written in 2/4 time.